

AT THE WATER'S EDGE

LECTURE SERIES

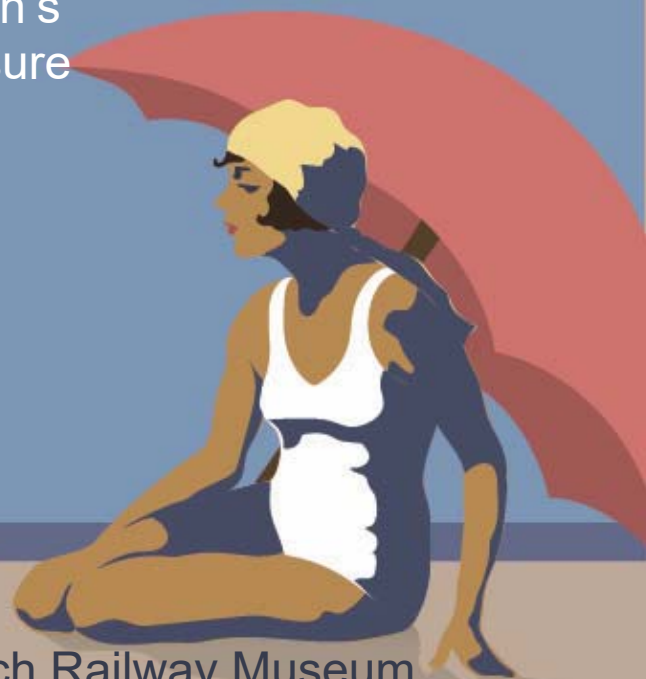
Recreation on Calvert County's Waterways 1890 through the 1970s

AFRICAN AMERICAN LEISURE DESTINATIONS AROUND WASHINGTON, D.C.

Author and public historian, Ms. Patsy Mose Fletcher, reveals the history behind Washington's forgotten era of African American leisure destinations.

September 17, 2017
3:00PM – 4:00PM

Chesapeake Beach Town Hall
8200 Bayside Road
Chesapeake Beach, MD 20732



Sponsored by The Chesapeake Beach Railway Museum
410.257.3892

Step back in time with "At The Water's Edge," a new lecture series highlighting how people enjoyed leisure time on the Chesapeake Bay from 1890 through the 1970s. The lecture series is made possible by the joint efforts of the Bayside History Museum, Calvert Library, Calvert Marine Museum and the Chesapeake Beach Railway Museum.

