

# The Chesapeake Dispatcher



Semi-Annual Newsletter of the Friends of the Chesapeake Beach Railway Museum, Inc.  
Museum Telephone (410) 257-3892

Vol. 24 Issue 1 Number 45

May 2005

## Message from the President of The Friends

It is my sad duty to report that our dear friend and Friends' Co-Chairman, Bernie Loveless, passed away last November 2004. Whereas the museum family sorely misses him, we are so blessed that he passed our way. Born in Washington, D.C. in 1916, Bernie had first hand knowledge of the feisty little railway that connected Washington with Chesapeake Beach. He lived near the tracks in Owings for part of his youth, and then his family moved to North Beach. The history of the Twin Beaches area intertwined with his own history. He rode the train; he walked the boardwalk; he fell in love with Dorothy on the dance floor at the Beach in 1937; he remembered the way everything used to be. He chose to share that knowledge with the rest of us.

In 1979, Bernie Loveless and Mildred Finlon agreed to lead the committee that would preserve the station, and start a museum. Bernie had recently retired from the government as an accountant, and knew how to get a lot accomplished with a tight budget. If he wanted something done right, he usually did it himself and enlisted the aid of all of his family members!

Last June we celebrated Bernie's and Mildred's 25 years of leadership with an anniversary banquet. The Calvert County Commissioners had honored his selfless service with proclamations the year before. The Town of Chesapeake Beach consistently honored Bernie as a war veteran and preserver of history. The citizens of Holland Point named their community center after him. A decade ago he was named Calvert County's Most Beautiful Person. Bernie Loveless certainly enriched the world around him, and our lives became richer because we knew him.

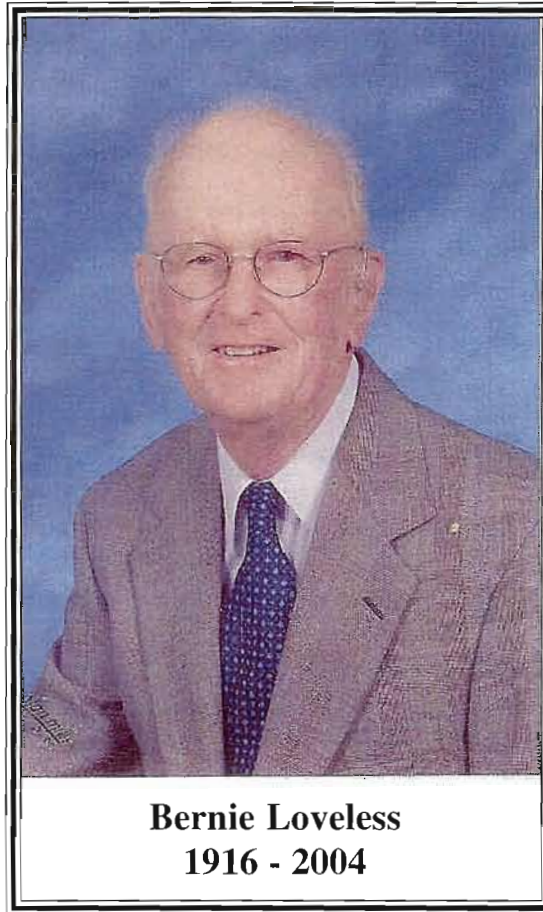
Joan D. Kilmon, President - Friends of CBRM

## Message From The Curator

Railroad history in Southern Maryland lost a true champion with the death of Bernard Loveless in November. He was a special friend, a thoughtful colleague, and an enthusiastic teacher. I learned so much from him as he shared with me his personal history and his love for the Twin Beaches and the Resort and Railway.

I feel that Bernie is truly looking over my shoulder every day as I go about my duties. He will always guide my work and inspire me to do new things while still caring for the old. The Museum that he worked so hard to build is a great legacy. We will continue to honor his life through our work at the Museum, and we will share his story with our visitors for many years to come.

Harriet Stout, Curator



**Bernie Loveless**  
1916 - 2004

## Summer Children's Programs – Better Than Ever

We are again offering a series of children's programs during the summer months from June through August on Thursday mornings at 10:00. We are adding craft activities to the programs, so each child will have something to take home; the programs will be a half hour longer this year. Some old favorite stories and games will return, but we will also have a lot of new things to share with our young visitors and their families.

We do need help with these programs. If you would like to help, please call us at 410-257-3892.

## RECENT ACQUISITIONS

We are continually adding to the collection of the Museum through gifts and purchases. Over the past few months we have made a number of purchases, mostly of postcards and a few books. We have also received donations from friends, and we wish to thank all these people for their generosity to the Museum. These additions to the collection add to the resources available for enjoyment and study.

Purchase - Color tinted postcard: "Dancing Pavilion, Chesapeake Beach, Md."; color tinted postcard: "A Picnic Party, Chesapeake Beach, Md."

Purchase - Black and white postcard: "Crabbing and Fishing on the Long Pier, Chesapeake Beach, Md. Black and white postcard: "Scenic Railway, Chesapeake Beach, Md."

Janet Bates & Family - Large Cartoon with frame: "Flashback": Original artist's drawing by Patrick Reynolds given in memory of Charles "Butch" Bates; Chesapeake Beach Amusement Park sign, c. 1960's.

Purchase - Railroad Magazine, March 1943. Article pp 66-68, "A Three Mile Switching Road." (East Washington Railway).

Purchase - Black and white postcard: "Let's Go Fishin', North Beach, Md."

Purchase - Color postcard: Kids and black dog on the beach, North Beach, Md. c. 1950's.

Laurence Hampton - Archival collection: papers and photographs relating to the CBR and the WA & B railroads, and various other topics of railroad history.

Purchase - Book: The Giant's Ladder, Harold Boner, Kalmbach Press, Milwaukee, Wisconsin, 1962.

Harvey E. Pyles, Jr. - Books: Railroad History and other topics.

Purchase - Color tinted postcard: "Belvedere Hotel, Chesapeake Beach, Md." Postmarked July 26, 1914.

Audrey Mae MacWilliams - Welcome Mat: Steam locomotive. Given in memory of her brother, Bernard Loveless.

Betty Renzi - DVD: Copy of old family motion picture footage. Enjoying Chesapeake Beach, summer 1962.

Grace Mary Brady - DVD: 25<sup>th</sup> Anniversary Celebrations for the CBRM, June 22, 2004.

Purchase - Black and white postcard: "A Bird's Eye View of Chesapeake Beach, Md. (From the marsh along Fishing Creek.)

Purchase - Color tinted postcard: "Loading Tobacco at Chesapeake Beach, Md."

James Tigner, Jr. - Postcard (photocopies): "Greetings from Chesapeake Beach Park, Md.", c. 1950's.

Purchase - Black and white postcard: "A Bird's Eye View of Chesapeake Beach". (From along the shore, looking south). Pre-1915; Black and white postcard: "At Chesapeake Beach". Bathers, dated Sept 4, 1905.

Purchase - Black and white postcard: "Uncle Billie's, North Beach...", postmarked Aug 22, 1944; Black and white postcard: "The Great Derby, Chesapeake Beach, Md."

Purchase - Color tinted postcard: "A Pretty Spot, Chesapeake Beach, Md."; Black and white postcard: "St. Anthony's Church, North Chesapeake Beach, Md."; Black and white postcard: "Charleston Avenue, North Chesapeake Beach, Md."

Purchase - Black and white postcard (reproduction): "New Dancing Hall, Chesapeake Beach, Md."

Purchase - Black and white postcard (photo): "Chesapeake Beach R. R."; Engine # 7 at Chesapeake Junction, Aug 9, 1931.

Purchase Black and white postcard: "Rapid Transit, Chesapeake Beach, Md." Postmarked July 27, 1911.

Purchase - Black and white postcard: "St. Anthony's Rectory, North Beach, Md."

Betsy Towle - Ticket stamp machine; Children's book: A Lucky Dog: Owney, U.S. Rail Mail Mascot, Dirk Wales, Great Plains Press, Chicago, 2003; Booklet: Owney: Mascot of the Railway Mail Service, James Bruns. Smithsonian Institution, Washington, D. C., 1992/1998; Stuffed Toy: Little Owney; Stuffed Toy: Big Owney.

### The Chesapeake Dispatcher

The Semi-Annual Newsletter of the Friends of the Chesapeake Beach Railway Museum, Inc.

Contributors: Harriet Stout, Joan Kilmon, Mildred Finlon, Betty MacDonald, Mary Ellen Curran, Kris Scott, John Riedesel & Larry Brown

Typesetting - Beach Designs  
Mailing - Janet Bates, Nancy Young, and Betty & Chuck MacDonald

Chesapeake Beach Railway Museum  
P.O. Box 1227 • Chesapeake Beach, MD 20732  
(410) 257-3892

## Look For A New Museum Program – The Swim Suit Edition

The Museum has developed a new program for presentation to adult groups entitled “Fun at Chesapeake Beach: An Illustrated History of the Chesapeake Beach Amusement Parks.” We have used lots of new and some old-but-seldom-seen photos of the various amusement parks that existed in Chesapeake Beach. These photos are supported by wonderful quotes from original sources. The program also shows the changing styles of bathing suits over the years of the parks’ histories, so we have subtitled it “The Swim-suit Edition”. We hope to offer it soon as a special museum program for adults, and we also hope that we can use it as a special program-by-request for various organizations in our community. The program was compiled from the collections of the Museum by Kristen Scott and Harriet Stout.



*Dive in! There's no jellyfish! The saltwater swimming pool was a huge attraction at Seaside Park in the 1930's. The picture is one of many used to explain the history of the parks.*

### ALL ABOARD FOR THE CHESAPEAKE BEACH RAILWAY MUSEUM

The Chesapeake Beach Railway Museum is seeking volunteers to help with the on-going activities of the Museum.



Volunteers have the opportunity to make new friends and to meet people from all over the world, share their community history with others, and help with the important and interesting work of the Museum in many ways. **New volunteers are always welcome!** For more information about becoming a volunteer at the Chesapeake Beach Railway Museum, please call 410-257-3892 weekdays between 9:00 AM. and 4:30 PM. Join us now!!! We need you!!!

## Volunteer Training Workshop

Our volunteers are an energetic, dedicated group. Without their support, many projects at the Museum would never get off the ground. This year at the Volunteer Training Workshop, we had the largest turnout ever. Over thirty volunteers came to learn, mingle and get a refresher course on Saturday, March 12<sup>th</sup>. About half were returning volunteers, but there was also a large group of new museum helpers as well as special guests from the new Bayside History Museum in North Beach. After introductions, Grace Mary Brady of Bayside History Museum gave a short talk on how their new museum came to be. Afterwards, Harriet went into the nitty-gritty details of the CBRM and volunteering. Next, we had a nice lunch at the Rod ‘N Reel Restaurant, provided by the Friends of the CBRM. To end the day, the Bayside Museum graciously hosted us at their museum, giving us a behind the scenes tour.

The following is a list of volunteers for 2004 and new volunteers for 2005.

Robert Alley	Jay Loveless
Don Avery	Audrey MacWilliams*
Joyce Fontana-Avery	Karen Kretzer*
Ralph Carrello	Ingrid Lamb
Mary Ellen Curran	Carolyn Leverone
Mike Curran	Charles MacDonald
Charlotte Allison	Betty MacDonald
Vince Allison	Bill Marshall*
Janet Bates	Martin McClenahan*
Larry Brown	Elizabeth McWilliams*
Vince Cipriani	Ann Parks
Hilary Dailey*	Diane Pitcher*
Mary Eisenman	Betty Quigley
Dennis Flake*	John Riedesel
Bernie Hammett*	Ruth Rondberg
J. Evans Ireland	Jane Schaub
Mildred Finlon	Joy Grosham
Ed Haack	Gene Grosham
Kathleen Hogan	Betsy Towle*
Joanie Kilmon	Kathleen Scott*
Joe Korczynski	Nancy Young
Patricia Lavato	Mike Zitzmann
Bernie Loveless	Lillian Walker

\* New volunteers

## GARDEN WORK

We look forward to another year of a beautiful landscape provided by the hard work of the Chesapeake Beach Garden Club. Charlotte Allison is now working on her plans for the plantings, and will have things in order by the time this newsletter reaches you. Thanks again, Charlotte and Garden Club, for the dirt under your fingernails and our lovely flowers!

## Ghosts Along the Right-of-Way! By John Riedesel

It's late. You're driving out Route 4 from Marlboro and you turn onto the new flyover for Route 260. Part way around the curve your headlights illuminate two strange white objects off the right side of the ramp.

"Did I see ghosts?" you say, as you blink and look again. In a way, you did see ghosts. They are the two remaining bridge piers of the Chesapeake Beach Railway's Lyons Creek trestle, thankfully saved from the road builder's blade through the efforts of Curator Harriet Stout and others.

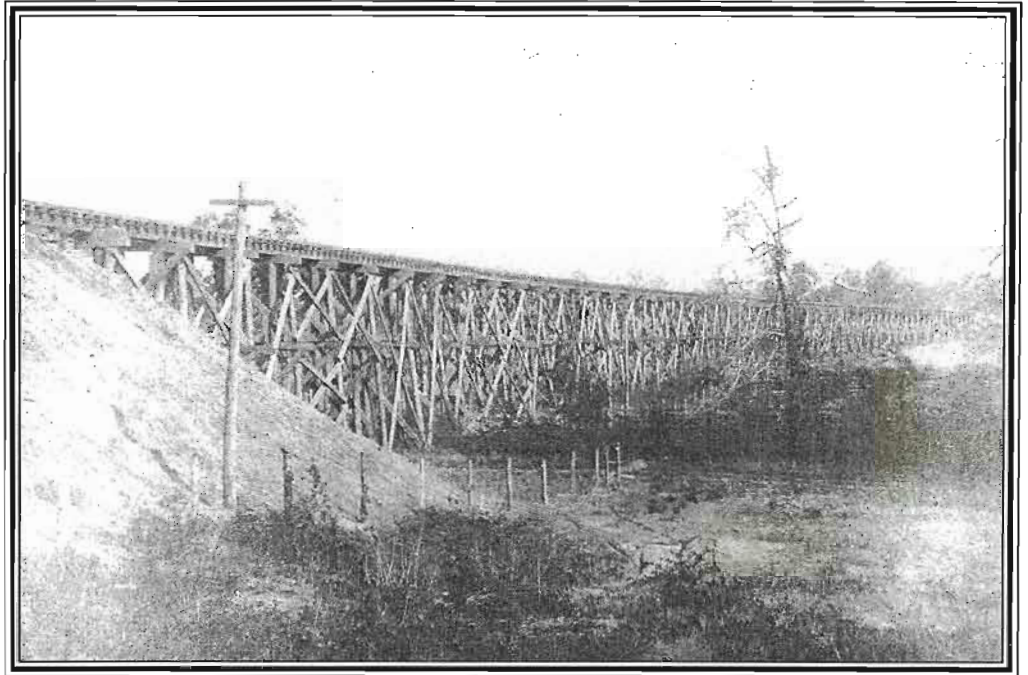
One of the obstacles encountered by the original CBRY builders in 1897-99 was the low, swampy valley of Lyons Creek, which forms the border between Calvert and Anne Arundel counties. The solution called for more than just a ground-level bridge over the narrow creek. Descending into the valley and out again would be an unacceptable change in elevation. The planners decided on a high trestle traversing the whole valley, about one-third of a mile long and 35 feet high, the largest trestle on the line.

Wood was cheap and plentiful, and hence the material of choice for all CBRY bridges. Specifications called for 12-by-12 inch, seasoned oak timbers, with mortised and bolted joints. In an effort to speed construction and save money, logs were used, many with the bark still on; and they were spiked together rather than bolted. The finished trestle, shown in the accompanying photo, had the appearance, described by Abraham Lincoln in speaking of a trestle on another line, as being built of "broomsticks and cornstalks." Though shoddily constructed and periodically in need of repair, the trestle served the railroad until its closing in 1935.

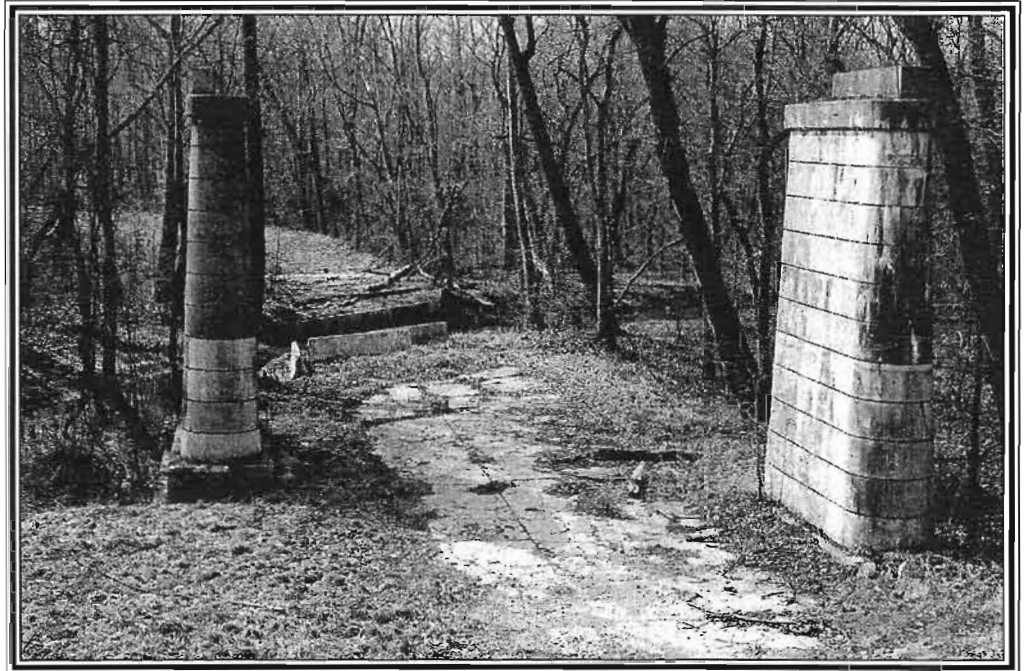
Not only did the high bridge traverse the wide, swampy creek valley, it also crossed the highway to Solomons, which itself spanned Lyons Creek at ground level. In 1931 the State Highway Commission demanded that CBRY replace the trestle with a concrete and steel structure to ensure the safety of vehicular traffic traveling below. The railroad had neither the desire nor the funds to comply; so, after much negotiation, an agreement was reached to reinforce the existing wooden structure with concrete piers on either side of the highway.

The wooden trestle is long gone as is the old highway bridge over Lyons Creek, but the concrete piers remain. Those are the "ghosts" we now see when we drive the ramp from Route 4 onto Route 260.

(Material for this article was taken from *The Chesapeake Beach Railway* by Ames W. Williams, 1981.)



*Lyons Creek trestle as it appeared in 1900. Construction is entirely of wood. Concrete piers were not installed until 1931. (From Williams, The Chesapeake Beach Railway, 1981)*



*The 1931 concrete piers as they appear today. Between the piers is a bit of pavement from the old alignment of the original road to Solomons, now Route 4. Photo taken from the new Route 260 flyover ramp.*

## Bay Breeze Summer Concert Series

On Thursday, June 9th, the Bay Breeze Summer Concert Series kicks off with a performance by the *Not So Modern Jazz Quartet*, a combo playing in the club venue of the 20's to 40's. The group, made up of clarinet, bass, piano and drums, is directed by Bill Rowe of Chesapeake Beach. *Two for You* will be appearing on Thursday, July 14<sup>th</sup>. Ralph and Janet are an energetic duo featuring one of the area's premier female vocalists. They perform a wide variety of musical styles from the 40's thru today. The ever-popular bluegrass band, the *Dixie Ramblers*, will return once again in their regular time spot on Thursday, August 11th. Under direction of Mike Phipps, this group never fails to attract a large crowd of enthusiastic bluegrass fans. The concert series will conclude on Thursday, September 8<sup>th</sup> with the *Rockfish* directed by Gary Pendleton, featuring special fiddler Bill Marquess. They are sure to entertain with their blend of rock, folk, bluegrass and blues.

All concerts are on the second Thursday of the month. They are outdoors on the museum porch starting at 7:30 PM and are free to the public. The Bay Breeze Summer series is made possible with the cooperation of the Calvert County Commissioners and the financial assistance from The Arts Council of Calvert County, the Maryland State Arts Council, the Town of Chesapeake Beach and our generous membership. We are grateful to all for their strong support. We also thank the Rod 'N Reel Restaurant for providing us with chairs and refreshments. We especially thank Betty MacDonald, our Concert Coordinator, who has arranged these entertaining and varied groups. Please mark your calendars and plan to join us for an enjoyable summer evening of music.

**June 9 - Not So Modern Jazz Quartet**

**July 14 - Two For You**

**August 11- Dixie Ramblers**

**September 8- Rockfish**

## Museum Partners with Library

On December 14, 2004, the Calvert Library, Twin Beaches Branch, joined forces with museum volunteers to host an Evening Storytime at the museum. The Polar Express by Chris Van Allsburg was the theme. With the recent release of the movie, there was high excitement and interest in both the story and the station. As the cold wind blew outside, and the hot chocolate warmed our insides, everyone who "believed" in the sounds of Christmas received a holiday bell, courtesy of the Friends.



## Spring Family Fun Day

This year's Spring Family Fun Day at the Museum will be **Sunday, May 15<sup>th</sup> from 12:30 p.m. to 3:30 p.m.** Bows the Clown will kick off the festivities at 12:30 p.m. making balloon sculptures. At 1 p.m. Sherry's Dance Center of Owings, will take center stage with a dance performance on the porch. Then at 1:45 p.m. Bows the Clown will do her magic show using a live rabbit. After her magic show, Bows will be face painting the rest of the afternoon.

Anyone who would like to have a photo taken in period dress is welcome to put his or her face through the cutout holes of the Museum's painting of an early 20<sup>th</sup> century family for a small fee to cover the cost of film.

The popular arts and crafts activities will be available. This time younger children can try making a train out of shapes. Older children will have a chance to "fossil hunt" at a table where they can try to find and identify local fossils hidden in a box of sand. Games popular with children during the early 20<sup>th</sup> century will also be available.

As always, the Family Fun Day events are free of charge.

## Special Programs At The Museum

Over the winter the Museum has presented a number of programs for visitors to the museum and also several outreach programs. These programs have been for both adults and children. A number of other special programs are coming up in the coming months. If you would like to volunteer to help us with any of these programs, please call us at 410-257-3892.

### Programs presented:

Cub Scout Troup visit to museum	March 5
Grandmother's Trunk, Clark Senior Center, La Plata	March 8
Calvert County Schools' Summer Camp Fair	March 15
Trinity Trackers, Lutheran Group, Joppa, Md.	March 19
Chesapeake Beach Town Easter Parade	March 26
P.G. County, Adult Education, Local History Class	March 30

### Upcoming programs:

Fort Washington Harley-Davidson Group	April 23
Grandmother's Trunk, Charles Co. Freedom Landing	May 24
History of Resort/Railway, Clark Senior Cen., La Plata	June 7
Visit to Museum, Charles County Antique Arts Group	June 7
Bus Tour, One-of-a-Kind Tours, Lancaster, Pa.	June 22
Primetime Children's Activity Cen. Summer Pgms.	June 28
Ann Arundel County Parks and Recreation Department, Summer Enrichment Programs (9 Programs)	June-July

## Website and E-mail

One way that many visitors learn about our Museum is to visit our website. Margie Bliss, a longtime Museum helper, is our Webmaster, newsletter publisher and general computer guru. Even though she is now thousands of miles away after moving to Hawaii, she manages to keep us online, on time and in print. Our new website went online almost two years ago and Margie has added many new and exciting pages to the website. During an average week in February, we got almost 140 visitors who went to the website 224 times (19 of them were repeat visitors). Come and check it out at [www.cbrm.org](http://www.cbrm.org) for yourself. Additionally, we have a new e-mail address for the Museum, [cbrailway@co.cal.md.us](mailto:cbrailway@co.cal.md.us). This allows us to have a general e-mail that people can write to with questions or comments, no matter who is at the Museum.

## Picnic in the Park

The Friends of the Railway Museum invite you to a picnic in the park. Which park? Why, Watkins Regional Park in Largo, Maryland, of course! That is where the old Chesapeake Beach Merry-Go-Round is located. The Maryland-National Capital Park and Planning Commission provides very nice picnic facilities there as well. Mildred Finlon has celebrated her birthday at Watkins Park the past few years and this year *you are invited!* Please come and help Mildred celebrate being 96 years young by riding the Merry-Go-Round she so fondly remembers. Watkins Park also has to offer a miniature train, miniature golf, walking trails, and a small snack bar. There is a minimal charge for each activity you choose, but entrance to the park is free.

**Save the date: Thursday, July 28, 2005, noon to 2 p.m.,** rain or shine. Bring your own picnic to the picnic tables at Shelters 10-14. R.S.V.P. to Janet Bates at 301-855-8915



*Mildred Finlon enjoys a turn on the kangaroo at the carousel at Watkins Regional Park.*



*An unpaved portion of the trail in Seat Pleasant. Photo by Vince Cipriani.*

## Hikers Explore Sites at the Western End of the CBR Y

Nineteen people and three dogs participated in the annual Hike Along the Right-of-Way on Saturday, April 9, after rain forced a postponement of the originally scheduled date, April 2.

The weather was sunny and pleasant as the group traveled by car to the first location for this year's hike, where the railbed crossed Brooke Lane off Brown Station Road in the Marlboro area. They walked a short section of right-of-way until stopped by a deep gorge where the line crossed Back Branch. Some of the participants found railroad artifacts such as spikes and clinckers from 1935 and before. The group visited two other sites accessed from Brown Station Road. Along Geaton Road, a neighbor, Jim Bryson, came to greet the hikers. He shared several fascinating items he's found after living along the right-of-way for twenty years, including a firebrick and a stoker. The group then moved to a location along Sansbury Road before driving to the Ritchie area and exploring sections of the rail line at Ritchie Spur and Old Walker Mill Road.

A small group finished the day by hiking to the very end of the old Chesapeake Beach Railway in Seat Pleasant. The old roundhouse and yard area is now occupied by a shopping center across from the Addison Road Metro Station. The original District Line depot is now the location of a gas station. Vince Cipriani shared photos of the roundhouse area and the stations from the time of the CBR. This helped the hikers picture the landscape of the railroad in the good old days.

Next year's hike will start at the Museum and explore the railroad's location in the Chesapeake Beach area. All are invited to this annual event on the first Saturday in April 2006.

## Early Railroads Part II

By Larry W. Brown

In Part I of this series, we looked at the means of removing friction from the early railroads. First, we saw the removal of the dirt road by the means of planks. This was followed by the replacement of the planks with wooden rails. These were replaced by iron rails. This occurred in 1767, two years before James Watt patented the first steam engine. Here we will take a short look at another problem facing the early railroads – the political climate of the day.

As we found in Part I, the first railroads used horses to provide the mechanical means to pull the coal wagons to the canals. There the coal was loaded on barges to be taken to the market place. These early railroads were basically as completely removed from steam, as were sailing ships. In the United States three new methods of transporting products made their appearance at about the same time – the steamboat, the canal boat and the rail car. The rail car was the slowest to gain popularity with the general public. As early as 1812, John Stevens proposed building a railroad between the Hudson River and Lake Erie in New York State. Instead De Witt Clinton built the Erie Canal. This canal opened on October 26, 1825 at a then staggering cost of \$7,600,000. The initial great success of the canal was taken as conclusive proof that the idea of a railroad was ridiculous. What followed was a period of canal mania resulting in the construction of canals like the Chesapeake and Ohio Canal. However, the railroad enthusiasts were not discouraged. Soon the American public was divided into two opposing sides. One side argued that canals were a tested means of transportation and railroads were not. Why spend money on an untested experiment?

As the United States expanded into the Mississippi Valley, trade between the eastern seaports and the forests and farmlands of the Mid-West became increasingly profitable. At first, each eastern seaport shared the wealth. However, the Erie Canal took much of the trade away from the Mid-Atlantic States. Baltimore was solely dependent on Maryland's toll roads and turnpikes.

These became highly inefficient as canals were built in parts of Pennsylvania. The Baltimore Seaport hoped to change this problem with the construction of the Chesapeake and Ohio Canal. Their hopes were destroyed when the eastern terminus of the canal was placed in Washington, D. C.

In 1826, several far-sighted Baltimoreans felt that they had a solution to this problem. Evan Thomas, the brother of Philip Thomas, a Quaker merchant and president of the National Mechanics Bank of Baltimore, returned from a trip to England to give an enthusiastic report on the new idea in transportation – a 'rail road'. He had studied every detail of the English Stockton

and Darlington Railroad. This was the first railroad designed for general passenger and freight service. About this time, William Brown, a member of the British Parliament, wrote to his American brother George about the English Railways as a general means of transportation. He described the construction of the Liverpool and Manchester Railway and its plans for rolling stock and motive power. George Brown was a director of the same bank of which Phillip Thomas was President. These two invited 25 other businessmen to a meeting, thus establishing the beginnings of America's first railroad - the Baltimore & Ohio Railroad.

Stone blocks were often used to support the rails at this early stage of railroads. The first stone of the B&O was laid in Baltimore on the Fourth of July 1828. It is interesting to note that on the same day the Chesapeake and Ohio Canal was started in Georgetown in DC. Excited Baltimoreans were determined that nothing would outshine the beginning of their own railroad. The B&O Railroad was a community enterprise in which almost every citizen of Baltimore had purchased a share of stock. 50,000 people were present to make the ceremony a memorable one.

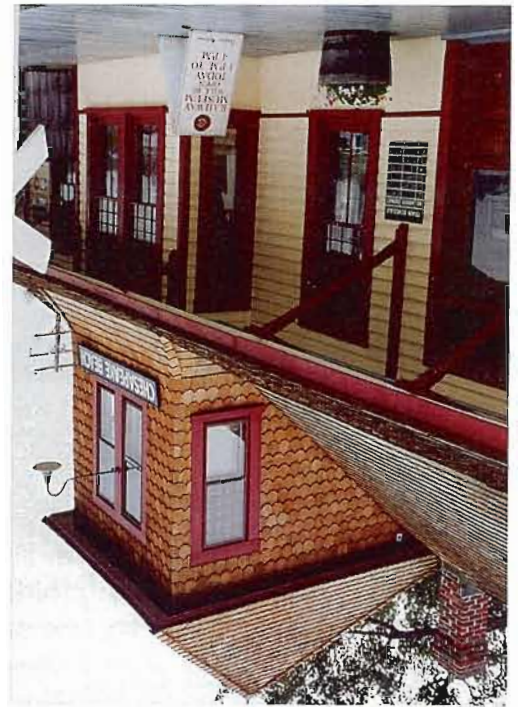
## Unique Holidays Windows

Our parlor car, "Dolores", had special window treatments this past Christmas holiday season. A local professional artist, Maceo Leatherwood, had recently been inspired by the whole story of Chesapeake Beach and was looking for a unique way to express what he felt. Janet Bates, Vice President of the Friends, had been looking for a worthy project to honor her late husband. She and her family had been hosting the Charles C. Bates Memorial Golf Tournament for the past 3 years in memory of Butch. He had been the Friends' Treasurer for many years and a good friend to us all. Butch would have loved how this project came together...Maceo's inspiration comes shining through his art and Janet's family's benevolence made it all happen. The train station has always been a focal point of holiday decorations in town, and now, even more so!

Look closely and you will see, left to right, a "Gibson" girl, Butch and Janet Bates, and Harriet Stout. These unique holiday windows will bring great pleasure for years to come.



*Dolores' Holiday Windows.*



Friends of the  
Chesapeake Beach Railway Museum, Inc.  
P.O. Box 1227  
Chesapeake Beach, Maryland 20732

Non-Profit Org.  
U.S. Postage Paid  
Chesapeake Beach, MD 20732  
Permit No. 1227

## Don't Miss These Coming Events

- May 15** - Spring Family Fun Day - 12:30 PM - 3:30 PM
- Mid-June thru Mid-August** - Childrens' Programs  
Thursday mornings - 10:00-11:45 AM
- June 9** - Bay Breeze Summer Concert - Not So  
Modern Jazz Quartet - 7:30 PM
- June 11** - Annual Friends Meeting - 2:00 PM
- July 14** - Bay Breeze Summer Concert - Two For  
You - 7:30 PM
- July 28** - Watkins Regional Park Picnic - Noon - 2:00 PM
- August 11** - Bay Breeze Summer Concert - Dixie  
Ramblers Bluegrass Band - 7:30 PM
- September 8** - Bay Breeze Summer Concert -  
Rockfish - 7:30 PM
- October 9** - Fall Family Fun Day - 12:30 PM - 3:30 PM

*For more information please call the  
Museum at 410-257-3892*

## Annual Friends Meeting You're Invited To A "PowerFul" Get-Together

The Annual Meeting of the Friends of the Chesapeake Beach Railway Museum will be held at the Chesapeake Beach Town Hall on Saturday, June 11 at 2 p.m. Following a short business meeting, there will be a wonderful PowerPoint presentation by Bruce Wahl, Vice President of the Town Council. Bruce has championed the Chesapeake Beach Railway Trail for many years, and it will finally become a reality! Come learn about the progress of the trail. Also, our Curator, Harriet Stout and her Assistant, Kris Scott will offer a sneak preview of their recently developed PowerPoint presentation on the history of amusements in Chesapeake Beach. This will be a "PowerFul" meeting that you won't want to miss. Another reason to attend – the newly renovated Town Hall is resplendent with archival photos from the museum.