

The Chesapeake Dispatcher



Semi-Annual Newsletter of the Friends of the Chesapeake Beach Railway Museum, Inc.
Museum Telephone (410) 257-3892

Vol. 23 Issue 2 Number 44

November 2004

Holiday Open House - Dec. 5 - 1:00 to 4:00 pm

Come one, come ALL!!! Our Annual Holiday Open House is scheduled for Sunday, December 5 this year. We look forward to this time each year. Everyone enjoys the good food and good conversation with old and new friends of the Museum. Put this day on your calendar, and put a batch of cookies in the oven to bring for the refreshment table. In fact, any treat you wish to share is welcome. The gift shop will be available for Christmas shopping. Get something special for the railroad buff on your Christmas list! (Remember, a 10 percent discount is available to Museum members.)

The Chesapeake Beach Hotel & Spa will also be hosting an Open House from 1:00 to 4:00 p.m. on December 5. All our guests are invited to visit. Plan to stop by next door for a visit to the lovely new facility when you come to our Holiday Open House. The walls of the hotel are adorned with vintage photographs of Chesapeake Beach – many of them provided by the Museum. What a lovely stroll down memory lane in a beautiful setting.

Christmas Decorations

We hope to add a new look to the Museum's Christmas festivities this year. Look for the Dolores to be crowded with travelers for the season. Artwork in the windows by Maceo Leatherwood will add an extra dimension to the holiday decorations. Some of the faces in the windows are taken from our photographic collection as well as familiar Friends of the Museum. Come by and see if you can identify any of the passengers.

Upcoming Events

Polar Express Storytime at the Museum at 7 pm - Tuesday,
Dec. 14, 2004

Right of Way Hike - Saturday April 2, 2005

Rain Date for Hike - Saturday, April 9, 2005

Volunteer Training Workshop - Saturday, March 12, 2005

Spring Family Fun Day - Saturday, May 15, 2005



Thank You To Volunteers

Our Museum could not function without the service given by our faithful volunteers. In 2004 our volunteers logged over 1500 hours. Thank you to all who have given their time and talents to the Museum. Betty Quigley also puts in many hours, scheduling volunteers and manning the Museum on the weekends. Thank you, Betty.

Volunteers are important in helping to keep us open on weekends. The following volunteers have served as weekend Station Masters as well as performing other duties.

Donald Avery	Ann Parks
Joyce Avery-Fontana	John Riedesel
Janet Bates	Ruth Rondberg
Mildred Finlon	Jane Schaub
Ed Haack	Lillian Walker
J. Evans Ireland	Nancy Young
Pat Lavato	Mike Zitzmann
Carolyn Leverone	

Many other jobs are available to volunteers. These include helping with special events, maintenance projects, and other special needs. The following are our helpers for these special projects.

Robert Alley	Joy Groshon
Charlotte Allison	Kathy Hogan
Vince Allison	Joan Kilmon
Larry Brown	Joseph Korczynski
Ralph Carrello	Ingrid Lamb
Vince Cipriani	Bernard Loveless
Mike Curran	Betty MacDonald
Mary Ellen Curran	Charles MacDonald
Gene Groshon	Diane Pitcher

Acquisitions Fall 2004

Purchase - Black and White Photograph: CBR Engine #7.

Purchase - Photographic collection: CBR rolling stock, c. 1930's. Handwritten manuscript by John W. Keefer about the CBR.

Ruth Woodhouse - Large archival collection from the late Ernest Woodhouse including magazines, books, and miscellaneous papers.

Purchase - Black and White Postcard: "Promenading on the Beach at Chesapeake Beach, Md." Postmarked Jul 15 1918.

Purchase - Black and White Postcard: "The Belvedere Hotel, Chesapeake Beach, Md." Postmarked Jul 8 190?.

Purchase - Color Postcard: 3 photos of the Rod 'N Reel Club, c. 1950's.

Purchase - Black and White Postcards: "Baby's First Sea Bath, Chesapeake Beach, Md. Postmarked Aug 26, 1907; "A Pretty Place, Chesapeake Beach, Md." Postmarked Aug 1, 1910; "Along the Shore, Chesapeake Beach, Md." Postmarked June ?, 1918.

Purchase - Black and White Postcard: "Bay Avenue, North Beach, Md."

Sue Coffey - Black and White Photocopies of originals/ Postcards: "Casino, Chesapeake Beach, Md. Postmarked Sept 3, 1907; "Boardwalk, Chesapeake Beach, Md." Postmarked Sept 3, 1907.

Kathy Hogan - Cinder Hook.

John Mayo Rector, Jr. - Archival collection of papers, photos, other documents and artifacts from the John Mayo Rector, Sr. (Last president of the CBR and East Washington Rwy.)

Joseph D. Smith - Hand cart. (Given in memory of Steve Kramer, father of Mrs. Smith.)

Purchase - Black and White Postcard: "Belvedere Hotel - Chesapeake Beach." Postmarked June 22, 1908.

Purchase - Black and White Postcard: "The Casino, Chesapeake Beach, Md." Postmarked Jul 10, 1911.

Purchase - Black and White Postcard: "St. Anthony Catholic Church, North Beach, Md."

Purchase - Color Postcard: "Dancing Pavilion on Boardwalk, Chesapeake Beach, Md." Postmarked Aug 26, 1912.

Purchase - Color Postcard: "Scene on Bathing Beach, North Beach, Md." Postmarked Aug 15, 1933.

Purchase - Black and White Postcard: "Fishing and Crabbing Pier, Chesapeake Beach, Md."

Joyce Lyons Terhes - Black and White Photographs: five family photographs of Lyons family at Chesapeake Beach and other resorts.

Joan Kilmon - Black and White Postcard: "High View Guest House - 11th & Md. Ave. - Chesapeake Beach, Md." From the Ritter Family Collection.

Purchase - Black and White Postcard: "Lillie." Freedley Studio Portrait.

Judith W. Lamarque - Vanity Case, c. 1920's.

Laurence Hampton Archival - collection with photographs, Washington, Baltimore & Annapolis Railroad and CBR items.

Full Circle for the Miller Family

Many people have donated family photos to the museum over the years. Whereas it is impossible to display all of the donations, they are each catalogued and available for research or later use. Donald Miller, a neighbor in Chesapeake Station, donated a number of pictures to the museum several years ago. During the renovations of the Rod 'N Reel Restaurant, the museum made available the wealth of pictures in the museum files to the decorators. Two of Donald's pictures were chosen. One is of his mother and her girlfriend standing in front of the Great Derby and the other is of his parents on the beach in front of the pier, both c. 1920's.

It is coincidental enough that Donald and his wife Margaret are neighbors to the Rod 'N Reel Restaurant, but the family story is even more entwined in local history. Donald's mother was Eleanor Beatrice Brown of Brown Station Road. She used to wave to a certain fireman named Edward Washington Miller on the Chesapeake Beach Railway as the train went by. Donald's parents truly had a romance of the rails! The pictures of them from so many years ago were taken within a stone's throw of the current location of the Rod 'N Reel Restaurant, the museum and Donald's home! What a wonderful tribute to his parents and a treat for his whole family to see how Chesapeake Beach comes full circle in their family history.

The Chesapeake Dispatcher

The Semi-Annual Newsletter of the
Friends of the Chesapeake Beach Railway Museum, Inc.

Contributors: Bernie Loveless, Harriet Stout, Joan Kilmon,
Mildred Finlon, Betty MacDonald, Mary Ellen Curran,
John Riedesel & Larry Brown

Typesetting - Beach Designs • Printing - Bayside Printing
Mailing - Bernie Loveless, Janet Bates, Nancy Young,
and Betty & Chuck MacDonald

Chesapeake Beach Railway Museum
P.O. Box 1227 • Chesapeake Beach, MD 20732
(410) 257-3892



Eleanor and Edward Miller at Chesapeake Beach.



Eleanor Brown Miller and friend on the beach at Chesapeake Beach in the 1920's.

Thank You, Bernie

Over the summer Bernie Loveless put in over 40 hours to repaint the Museum sign at the end of the building. He took it home to do the work. Then he brought it back and he and his son Jay reinstalled it in the old position. But the work he did makes it look as good as new. Thanks, Bernie, for another job well done!

Thank You To The Chesapeake Garden Club

Once again, the Chesapeake Beach Garden Club beautified our grounds for the spring and summer months with lovely plantings and hanging baskets. Special thanks to Charlotte Allison, who put in many hours to keep things looking nice. Also thanks to Chuck MacDonald who took on the task of keeping the hanging baskets and potted plants watered during the summer.

The Old Made New

If you haven't been by the Museum in awhile, you are in for a treat. Over the late summer and early fall, the building has received a lot of TLC from Calvert County. The biggest job was the complete replacement of the cedar shake roof. The old roof had been on since the building renovations in 1981 (?), and it was determined that it needed to be replaced rather than patched this time. Some of the old shakes had weathered to half the thickness of their original 1981 size. The Museum building also sports a new coat of paint and the deck has been repaired and freshly painted.

Thanks to the Department of General Services and the Commissioners of Calvert County for supporting this much-needed work.

Welcome To Kristen Scott

The Museum has added to our staff with a part-time office aide. The position is funded through the budget support of the Calvert County Commissioners. Kristen Scott joined the Museum on October 4. She works half days, helping Harriet out with all sorts of jobs. Kristen is tackling many projects that have been waiting for the Right Person to come along. Her cheerful personality is a great addition to the Museum. Come by and say hello.



Bernie Loveless, sign painter extraordinaire, and Charlotte Allison, head gardener, pose beside their work.

Exhibit And Conservation Improvements

On your next visit you may notice that things are looking better as the care and conservation of collections and exhibits continues. Catherine Valentour is working on the conservation treatment of many of the objects on display. If a favorite display is missing, it may just be off receiving the TLC that will ensure its long-term survival.

The framed exhibits are being upgraded and improved by Kathleen Addario. She has added a number of exciting new items to the exhibits with top-notch archival framing; take note of the two new framed sets of postcards, in particular. Additionally, she has created a beautiful traveling exhibit that has already made several appearances at special events on other sites. Also coming in the New Year will be a New Look for the display of photos of the CBR rolling stock.

Historic Photos Decorate Renovated Town Hall

The newly renovated Chesapeake Beach Town Hall was dedicated on October 5. If you haven't stopped by to see it, take the time to do so sometime soon. The Museum shared photos with the Town to decorate the rooms. Town Councilman Stewart Cumbo reviewed the photos in our collection and chose his favorites. It was a delight to work with the Town Hall committee, especially Stewart. It's great to see our photos being enjoyed by so many other folks in their new location.

Busy Summer With New Neighbor

The Museum had a busy summer, enjoying the visitors who came to stay in the Chesapeake Beach Hotel and Spa. We had visitors from far and wide, and weekends were particularly busy. We have also made an effort to keep the staff of the hotel and related facilities informed about our special events and daily schedule. We are incorporating a Hospitality Week for the Spa, Hotel, Restaurant, and Tackle Shop staff in our calendar of events to provide a friendly orientation to the Museum.

Visitor Statistics

Once again, we had a busy year, filled with visitors from far and near. Visitors from Guatemala, Luxembourg, France, New Zealand and Alaska found their way to our museum over the summer. At least 14 countries and 36 states were represented in our guest book, while a total of 8,897 visitors were counted between January and October.

Last Chance For Old Newsletters

If you would like any copies of old issues of the Newsletter, please get in touch with the Curator at the Museum (phone 410-257-3892). We will be discarding all old issues this winter, so this is your last chance to get any issues that you may be missing. This is absolutely your LAST CHANCE FOR OLD ISSUES OF THE CHESAPEAKE DISPATCHER!!!

Fall Family Fun Day

A puppet show and dance revue kicked off the annual Fall Family Fun Day October 3, 2004, which lasted from 12:30 p.m. to 3:30 p.m. The event was the fourth in the new series of Family Days. The Museum hopes to engage a previously untapped segment of the population into the history and culture of the Chesapeake Beach resort with these programs.

Activities included making stationmaster visors and the ever-popular pinwheels. In addition, children could test their coordination skills by playing pick-up-sticks or jacks.

Diane Herbert's All-Star Dancers took to the porch with a variety of dance numbers and colorful costumes. Face painter Ming Diaz, decked out in clown regalia, returned to wow everyone with his artwork. In keeping with the day's Halloween theme, The Blue Sky Puppet Theatre performed "Rufus Meets the Halloween Witch."

About 300 people turned out for this successful event. The Dolores was also decorated as a haunted railroad car. Children and adults alike were lured into the car by sounds of railway ghosts and goblins. A fog machine set the scene for the skeletons and remains of century-old railway riders. Bats and cobwebs brushed visitors as they passed through, while the Grim Reaper stood ready to pounce on the way out.



Face painter and clown, Ming Diaz works on one of many delightful creations.



Three girls from Diane Herbert's All-Star Dancers step lively

“Road On Rails” by Larry Brown

When we think of early railroads, we tend to think of gargantuan, dirty, black, hissing steam locomotives. Actually, the idea of building a railroad begins about 400 years ago. Galileo was the first to show that a wagon begins moving when a force overcomes its inertia or the weight of the wagon. He further showed that the wagon would not stop unless another force acted on it. This force is friction. This leads to the two fundamental ideas behind a railroad. The first is a mechanical means of developing a force to move the weight of the train. The second is to remove most of the friction with a smooth running surface. Originally, these two principles were treated separately but today are combined to produce a truly economically functioning railroad.

The first record of a “road of rails” appears in 1602. The English collieries (coalminers) delivered their coal in wagons to nearby canals. Canal boats then transported the coal to major distribution points. The pulling of these large, heavy, horse-drawn coal wagons along the public dirt highways made deep ruts in the roads. The public was a little upset about this damage much as we are today with our potholes. Some anonymous, ingenious person thought of repairing the roads by laying wooden planks in the furrows. The reduced friction of this crude roadway allowed coal wagons to reach the canal successfully in a shorter time and with less strain on the horses. Certain coalmine owners, seeing the advantages and increased profits, constructed special planked roadways to the canal. This eliminated the traffic jams of their own making and citizen complaints of potholes. The roadbeds were leveled as best as a horse drawn machine could do. Oak logs were laid crosswise on the leveled roadbed at three to four foot intervals. Modern railroads still use this tie concept for their roads. Thin wooden rails were laid lengthwise on these ties. So effectual was this road of rails in reducing friction that a single horse was able to pull the same large wagon of coal that previously required two or three teams of horses.

Obviously, the wooden railroads had a tendency to wear. A thin sheet of iron was laid on top of the wooden rails to increase the life of the rails. The iron sheet was then grooved in the middle as a method to keep the wooden wheels of the cars on the track. In 1738, cast iron rails laid directly on the crossties replaced this arrangement. This gradually changed when the rails were made with a groove on the side to hold the wheels. Iron wheels replaced the wooden wheels on the carts with the invention of an effective braking system. Today, the steel wheels of a train are flanged instead of the rails to hold the train to the track. This led to the ‘I’ shape concept of modern rails. To reduce friction further, today the wheels and axles are made in one piece allowing a more efficient lubrication of the axle.

Since the iron was brittle, it frequently broke under the weight of the heavily loaded coal wagon causing much delay and expense. In 1768, this difficulty led to the idea of dispersing the weight by using a number of smaller carts. Today, we refer to this as the **consist** of the train.

Summer Concerts

It was a fairly mild summer with no hints of hurricanes our way. But it always seemed that the second Thursday of the month, we could count on the threat of rain or thunderstorms. However, all concerts were held with sizable and enthusiastic crowds staying dry on the porch when necessary. The cookies and lemonade prepared by the Rod ‘N Reel continued to be a tasty treat during intermission.

Cancellations due to weather remain a decision made by the performers - do they risk the consequences of wet instruments and equipment or go on with the show? It’s always a last minute call. Lets hope for drier weather next summer on concert nights.

The ’04 season started in June with the return of the *Back Pages Band* directed by Henry Smith. If you liked the rock and roll era, you loved the beat of this band. In July, it was the first time appearance of Steve Watson’s *The Pure Luck Band*. All enjoyed the high-energy vocal and musical entertainment. In August, it was the talented Mike Phipps and his *Dixie Ramblers*, providing the best sounds of blue grass. A crowd favorite, Mike will be returning next August, so mark your calendars. In September, the series concluded with *The Calvert Brass Consortium* directed by Dennis Vogel playing patriotic, jazz and show tunes. Dennis’s brass did not require speakers and was not hampered by the wet evening.

Our concert series is reminiscent of concerts in the park from yesteryear. We are consistent - it’s the second Thursday of June, July, August and September. Mark your calendars now for next year. For information regarding the concerts you can check the Chesapeake Beach Railway Museum webpage (www.cbrm.org) or call the museum at (410) 257-3892.

Polar Express Special

The Museum teams with the Twin Beaches Library on Tuesday, December 14, at 7:00-8:00 p.m. to present a special Evening Storytime at the Museum. The very popular children’s storybook, *Polar Express* by Chris Van Allsburg, lends the theme for this special occasion. Children of all ages are invited to come aboard for this free holiday event!

Caroling Streetcar

Christmas shoppers in Washington, D.C. once enjoyed the sound of children's voices singing carols from aboard the caroling streetcar. From 1938 until its last run in 1961, this car was an annual holiday tradition. About 60 children were chosen from the city's Parks and Recreation Department playground areas. They rode the decorated car through the streets for two nightly runs twice a week. Sadly this Christmas journey came to an end when the trolleys stopped running in 1961.



The Caroling Streetcar. Photo from The Sunday Star Magazine, December 16, 1956, donated by the Woodhouse family.

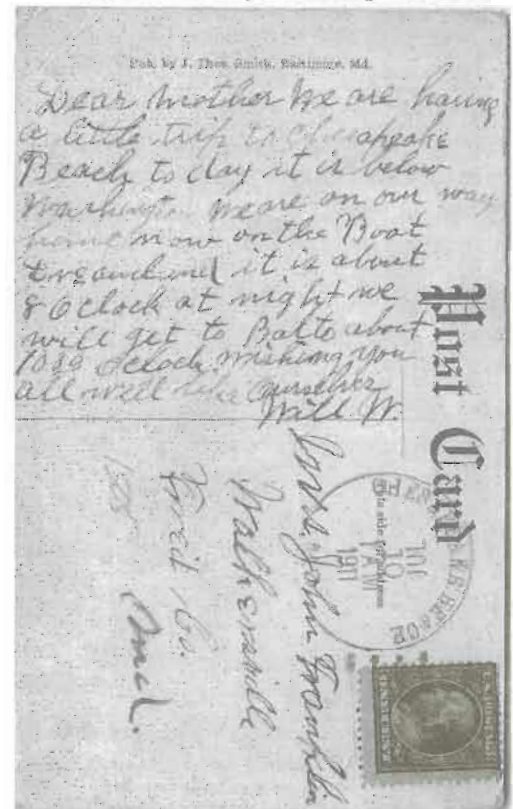
These newspaper photos were included in a donation of magazines and books given to the Museum in June by Ruth Woodhouse and her family; the collection belonged to her late husband Ernest Woodhouse. Thanks to the Woodhouse family for their generous gift to the Museum.

Message from the President of the Friends

Upon the "retirement" of Bernie Loveless and Mildred Finlon as co-chairs of the Friends of the Museum, a new board of directors has been conducting the business of the Friends since June. Whereas Bernie and Mildred will always be members of the board, several other members have been added in accordance with the bylaws. The board of directors consists of Joan Kilmon, President; Janet Bates, Vice President; Charles MacDonald, Treasurer; John Riedesel, Secretary; Betty MacDonald, Larry Brown, Mary Lanham and Harriet Stout. It will truly "take a village" to even come close to all Bernie and Mildred accomplished the first 25 years of the museum's history!

Another Surprise Purchase

The purchase of a postcard of the old Casino at Chesapeake Beach revealed an interesting message on the reverse. Here is a first-hand account written on the steamboat, Dreamland, as it returns to Baltimore after a day at Chesapeake Beach.



Become a volunteer and make new friends and meet people from all over the world. For more information, please call 410-257-3892 weekdays between 9:00 A.M. and 4:30 P.M.

Near Miss on the Rails

Sometimes acquisitions bring delightful surprises. The purchase of a group of photos, taken of CBR engines in the 1930's yielded not only photos but also a handwritten manuscript of an article about the Railway. The article was written by John W. Keefer and is dated March 1943. H.M. Tischler took some of the photos and the others appear to be Keefer photos taken to illustrate his article.

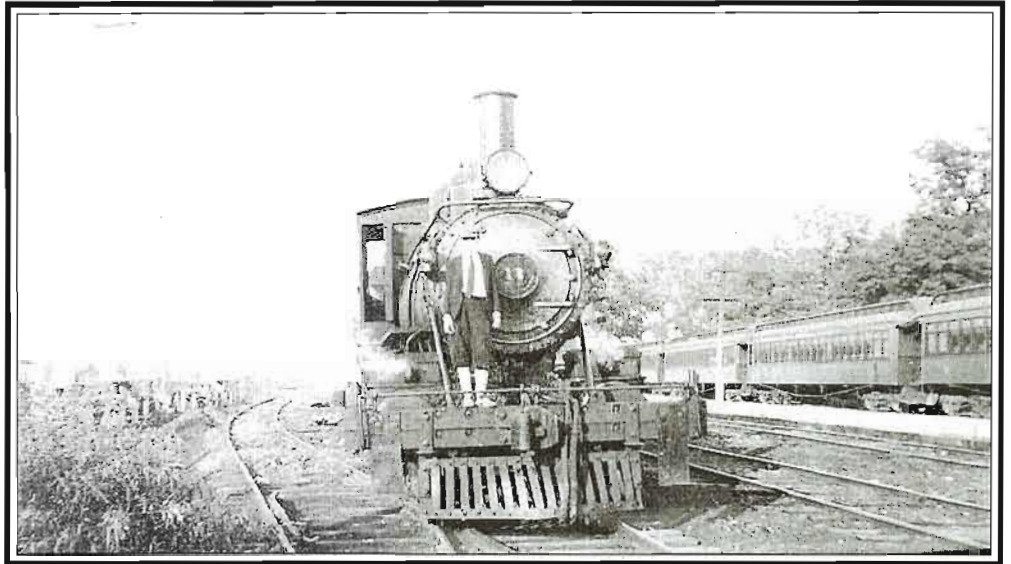
. . . In the late summer or early fall of 1934, I rode in engine No. 11 with fireman (and Master Mechanic) Levi Greenwell and engineer Griffith - from Chesapeake Beach, MD to Seat Pleasant, Md. (at the District Line Sta. - end of streetcar line, where trolley passengers going to Chesapeake Beach changes to C.B. Railway) - the Ry. station at this point now gone.

Somewhere along the line, between Chesapeake Beach and Seat Pleasant, engineer Griffith became aware of something walking or standing between the rails quite a long distance ahead. We were going down a long grade, and he shut off the throttle, allowing the train to coast, meanwhile blowing the whistle over and over again. This was an evening run from the Beach to D.C., and the sunlight had faded into dusk. Visibility was poor, and I don't believe any of us really knew at first, what was on the right-of-way, but suddenly Griffith stood up and grabbed the Johnson Bar and flung it into reverse position and opened the throttle. This spun the drivers backwards, helping to slow the train rapidly. Then he shut off the throttle and threw the air-brake handle into Emergency position (in other words, he put it "in the Big Hole"). The train bounced and lurched to a grinding stop, and we missed someone's cow that was grazing between the rails by several feet.

She was completely unconcerned about the locomotive that had stopped behind her, some three or four feet.

Her owner, a lady living nearby, suddenly noticed what had happened and ran screaming from her house to take her cow back into pasture. I was about 15 yrs. old at the time and I thought this was quite an experience, and I still do.

John W. Keefer



Young John Keefer on the cowcatcher of Engine #11. From the photo files of the CBRM

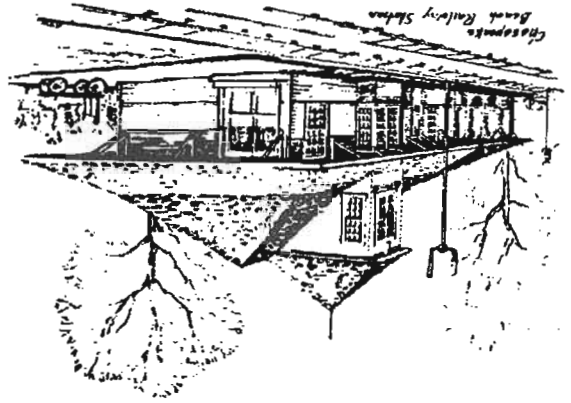
Community Outreach Programs

Stories, pinwheels and candy are all in a day's work at the Museum. In the past six months the Museum has had a number of community outreach programs, which have kept both Mary Ellen Curran and Harriet Stout busy with presentations to a variety of groups.

Mary Ellen visited several special events at other sites and displayed our new traveling exhibit. Participating in the annual Children's Day on the Farm at Jefferson Patterson Park and Museum on Sunday, June 6, exposed hundreds of families to the CBRM opportunities and boosted visitation to the Museum. Staff and volunteers helped children make red, white and blue pinwheels at the event, which drew a large crowd to the table. On Saturday, July 3 Mary Ellen and volunteers returned to JPPM for a repeat exhibition during Calvert County's 350th Anniversary Picnic. On August 28 and 29 Mary Ellen and several volunteers exhibited on the North Beach boardwalk during Bayfest. This helped raise public awareness of the CBRM and our programs.

Most recently we participated in several outreach programs in the town of Chesapeake Beach related to Halloween. On October 24 Mary Ellen and Kris Scott along with Diane Pitcher handed out candy at the Waterpark to some 500-700 children for the Chesapeake Beach Town Halloween Family Fun Day. Thanks to the Friends of CBRM for purchasing the candy for the children. Mary Ellen then joined other readers at the Beach Elementary School for Scary Stories night on October 26.

Harriet presented several outreach programs during October and the beginning of November. On October 12 she presented a program on early 20th century clothing to the Antique Arts Association of Calvert County. Additionally, she traveled to Windy Hill Elementary School on October 22. On November 12, Harriet presented 6 programs for the Beach Elementary School's Annual Career Day.

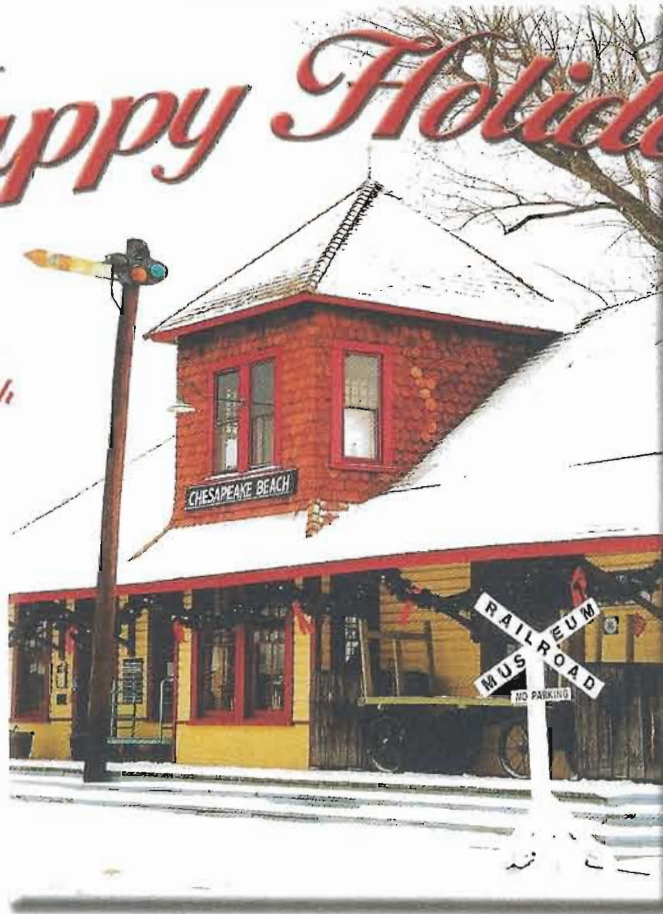


Friends of the
Chesapeake Beach Railway Museum
P.O. Box 1227
Chesapeake Beach, Maryland 20732

Non-Profit Org.
U.S. Postage Paid
Chesapeake Beach, MD 20732
Permit No. 1227

Happy Holidays!

*Please join us
at the Chesapeake Beach
Railway Museum
Open House
Sunday December 5
1:00 to 4:00 pm*



*Chesapeake Beach
Hotel and Spa
also hosts an
Open House
Sunday December 5
1:00 to 4:00 pm*